



PELHAM

# Your space



# Forty

## East Building

## West Building



First	2,077 sq ft (NIA)
Ground	1,690 sq ft (NIA)

First	2,497 sq ft (NIA)
Ground	3,391 sq ft (NIA)

Total 3,767 sq ft (NIA)

Total combined 9,655 sq ft (NIA)

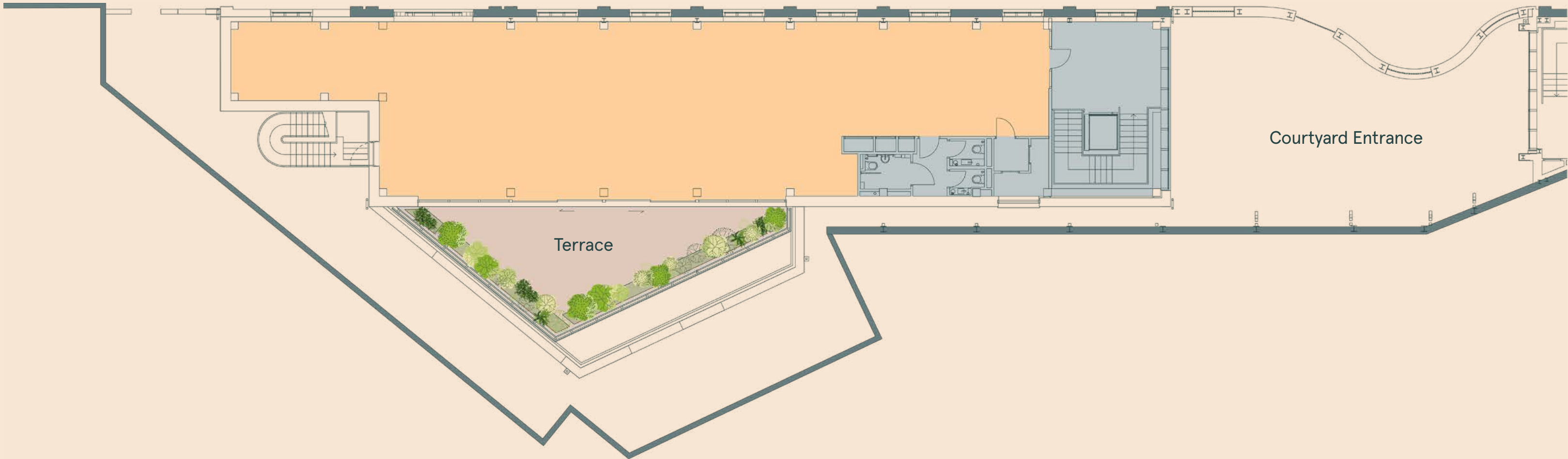
Total 5,888 sq ft (NIA)

# West building



1

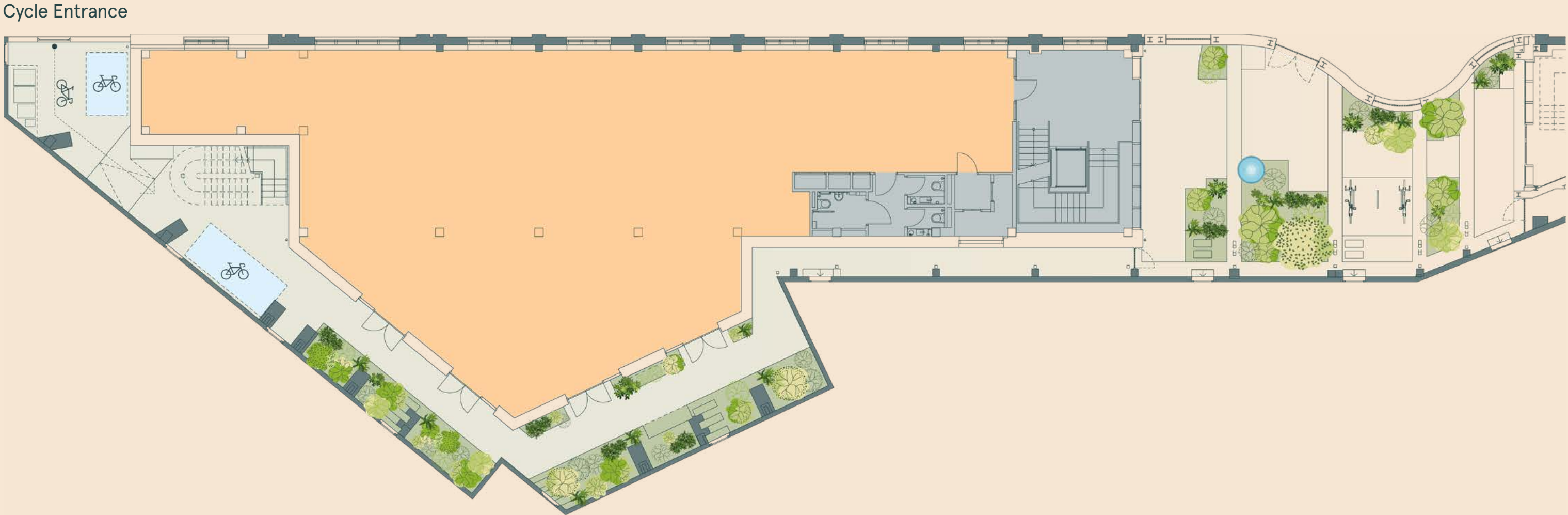
2,497 sq ft (NIA)  
(616 sq ft terrace)



Total: 5,888 sq ft

G

3,391 sq ft (NIA)



Key	
<span style="display:inline-block; width:15px; height:10px; background-color:orange; border:1px solid black;"></span>	Office
<span style="display:inline-block; width:15px; height:10px; background-color:blue; border:1px solid black;"></span>	Core
<span style="display:inline-block; width:15px; height:10px; background-color:brown; border:1px solid black;"></span>	Terrace
<span style="display:inline-block; width:15px; height:10px; background-color:lightblue; border:1px solid black;"></span>	Cycle parking

Floor plans not to scale. For identification purposes only.

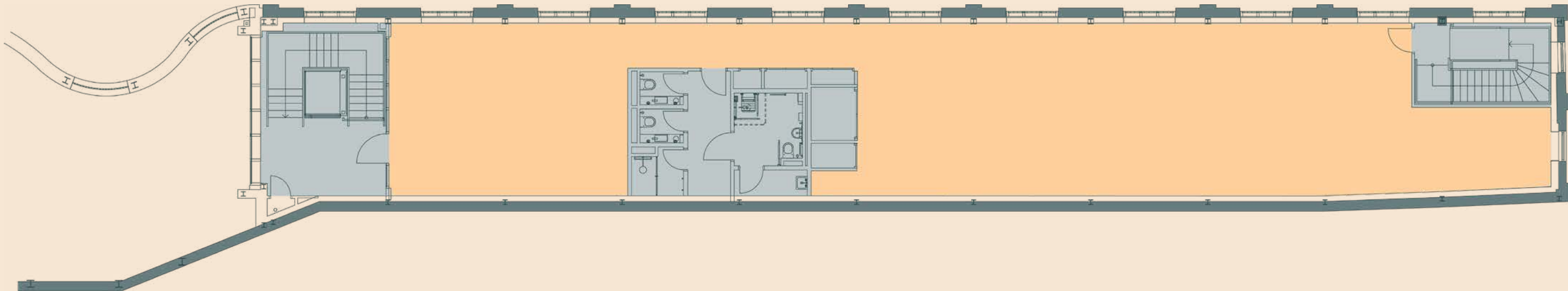


# East building



1

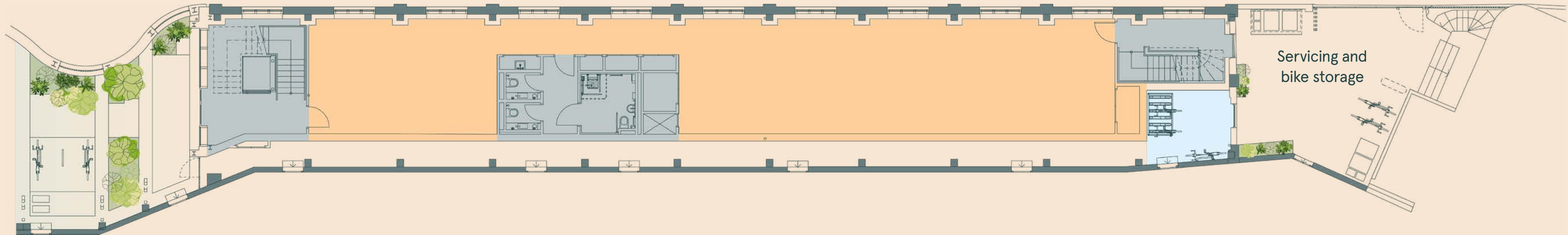
2,077 sq ft (NIA)



Total: 3,767 sq ft

G

1,690 sq ft (NIA)



Key	
<div></div>	Office
<div></div>	Core
<div></div>	Cycle parking

Floor plans not to scale. For identification purposes only.



fortypelham.com

# Contact

EDWARD CHARLES  
& PARTNERS W 1  
CHARTERED SURVEYORS

**Jamie Shuttle**

jshuttle@edwardcharles.co.uk  
07788 414332

**Ian Bradshaw**

ibradshaw@edwardcharles.co.uk  
07468 525486



**Freddie Corlett**

fcorlett@savills.com  
07870 555842

**Andrew Wedderspoon**

awedderspoon@savills.com  
07807 999 363

The Agents for themselves and for the vendors or lessors of the property whose agents they are give notice that, (i) these particulars are given without responsibility of The Agents or the Vendors or Lessors as a general outline only, for the guidance of prospective purchasers or tenants, and do not constitute the whole or any part of an offer or contract; (ii) The Agents cannot guarantee the accuracy of any description, dimension, references to condition, necessary permissions for use and occupation and other details contained herein and any prospective purchasers or tenants should not rely on them as statements or representations of fact but must satisfy themselves by inspection or otherwise as to the accuracy of each of them; (iii) no employee of The Agents have any authority to make or give any representation or enter into any contract whatsoever in relation to the property; (iv) VAT may be payable on the purchase price and / or rent, all figures are exclusive of VAT, intending purchasers or lessees must satisfy themselves as to the applicable VAT position, if necessary by taking appropriate professional advice; (v) The Joint Agents will not be liable, in negligence or otherwise, for any loss arising from the use of these particulars. October 2025.